

**Engineered mass timber solutions**

Scandinavia

# WOOD AS A BUILDING MATERIAL

With mass timber products and construction solutions from binderholz construction projects are created that meet all normative requirements for building physics, fire, sound and heat protection as well as moisture regulation. The mass timber buildings are of solid value, stable, and meet the highest standards of quality, cost-effectiveness and ecological sustainability.

To guarantee this, all binderholz construction solutions are developed, comprehensively tested and certified in a practice-oriented manner. A large number of successfully realized reference projects and the ever-increasing demand prove that mass timber construction is as popular as it is economically competitive. In addition, there are other good reasons for solid timber construction.

Mass timber stands for well-being and comfort. This is ensured by the versatile architectural design possibilities alone. In addition, it is a completely unpolluted, natural building material, so that a house construction made of mass timber has a positive effect on health. Together with the excellent properties of the wood mass as heat and moisture storage, the warm wood surfaces guarantee a balanced living environment and a high degree of comfort.

As a binderholz customer, you profit from our comprehensive consulting and solid service. The experienced experts in our strong technical department see to this. Our qualified engineers, construction technicians and draftspersons provide competent support for you in all matters relating to structural design and design services, building physics and fire protection. They are always a step ahead and not just at the level of the latest state of the art because of their many years of experience and intense research and development work.

## Our services

- Consulting on all binderholz products and application possibilities with specialisation in the area of wood construction products such as the binderholz CLT BBS, glulam or solid wood panels
- Structural, building physics and fire technological construction solutions and component assessments based on many years of experience and intense research and development work
- Personalised project advice from highly qualified employees at the office and in the field with technical project consulting, if needed also on site
- Consulting on supplementing building, sealing and joining materials
- Product-specific support for drafting service specifications
- 3D design and work preparation in state-of-the-art CAD-CAM systems
- Optimised design process through building information modelling
- Design coordination for diverse mass timber buildings



## CONTENTS

Oksenøya senter - Lysaker   Norway	4
Oksenøya senter - Lysaker   Norway	5
Hent Bussdepot - Bodø   Norway	6
Nesset Helsehus - Eidsvåg i Romsdal   Norway	7
Stadshus - Växjö   Sweden	8
Care home - Alvesta   Sweden	10
Flesberg school - Lampeland   Norway	12
Okstad skole - Trondheim   Norway	14
Nordlandet Kindergarden - Kristiansund   Norway	15
Kildal Omsorgssenter - Roa   Norway	16
Johannson Kaffee - Vestby   Norway	18
Skogveien - Oslo   Norway	20
Strandsnäckan residential buildings - Växjö   Sweden	22
Hoppern skole and sportshall - Mos   Norway	24
Sjetne skole - Sjatnmarka   Norway	26
Karihola Kindergarden - Oslo   Norway	27
Vallen residential buildings - Växjö   Sweden	28
Knapstad Flerbrukshall - Knapstad   Norway	30
Foerskolan Skole - Växjö   Sweden	32
IDD Kongveien skole - Halden   Norway	34
Lokenasveien - Lorenskog   Norway	36
Karlshus skole - Råde   Norway	38

# Oksenøya senter

Lysaker, Norway

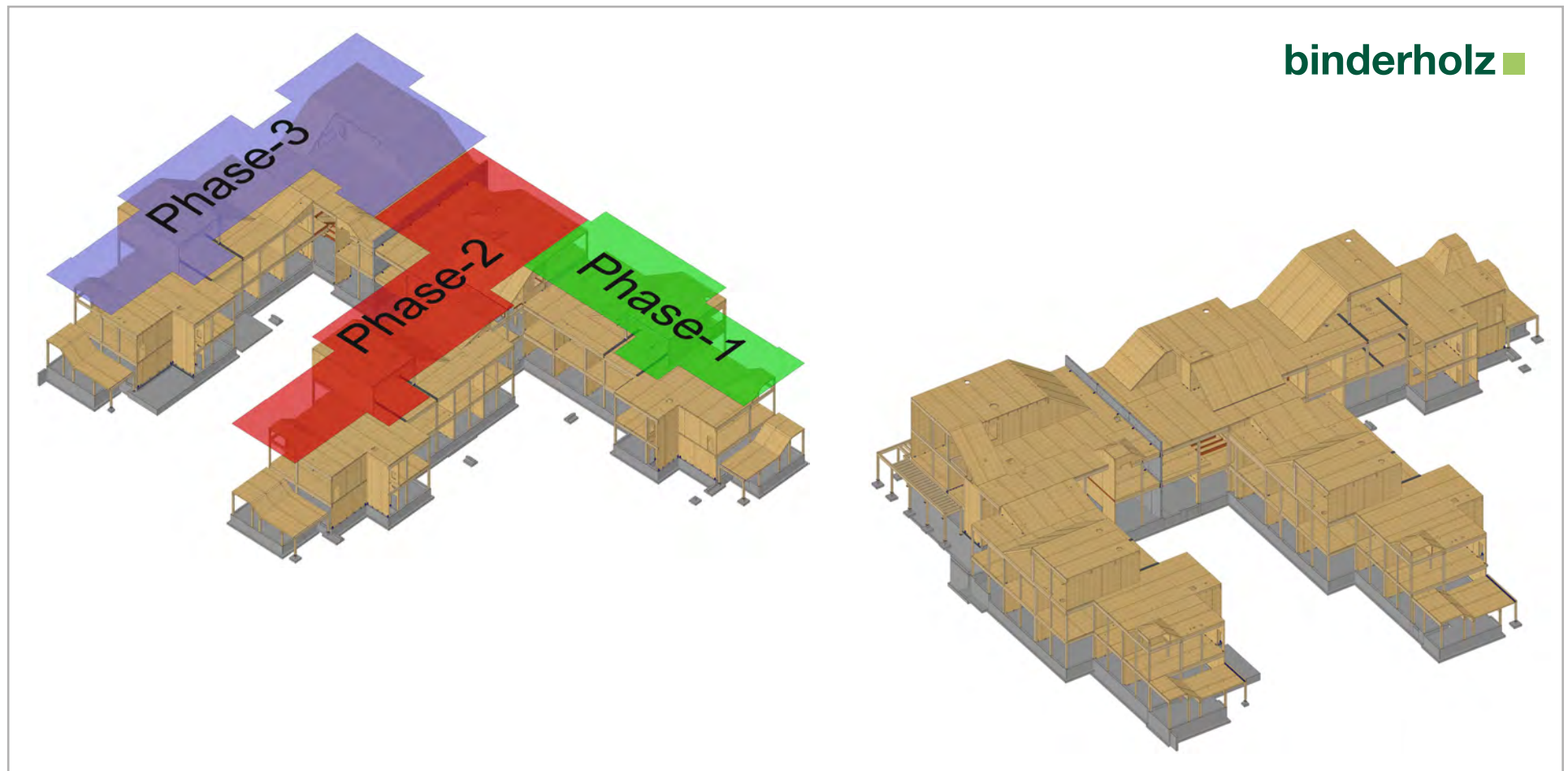
**Project** school, care homes, kindergarten  
**Project type** new building  
**Establishment** 2022  
**Customer** Veidekke Entreprenør AS  
**Assembly** 2020

## Scope of work

Structural calculation, coordination and implementation of models from other technical trades as mechanical, electrician, ventilation etc., production modelling, site assembly plans, calculation and delivery of fixing materials, Assembly of the complete wooden structure

## Scope of delivery

1492 m<sup>3</sup> BBS, 145 m<sup>3</sup> Glulam  
Complete set of connection material for the wooden structure



# Oksenøya senter

Lysaker, Norway

**Project** school, care homes, kindergarten  
**Project type** new building  
**Establishment** 2022  
**Customer** Veidekke Entreprenør AS  
**Assembly** 2021

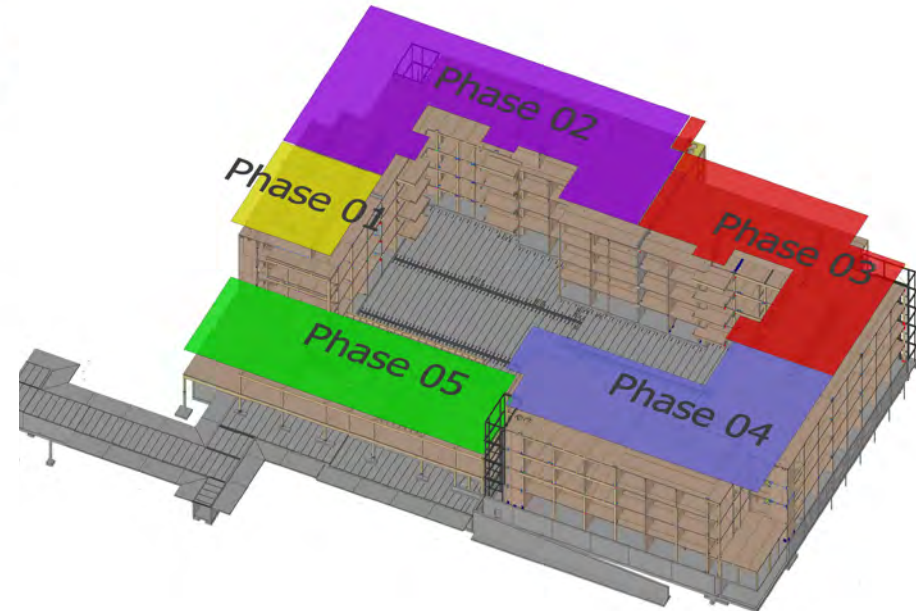
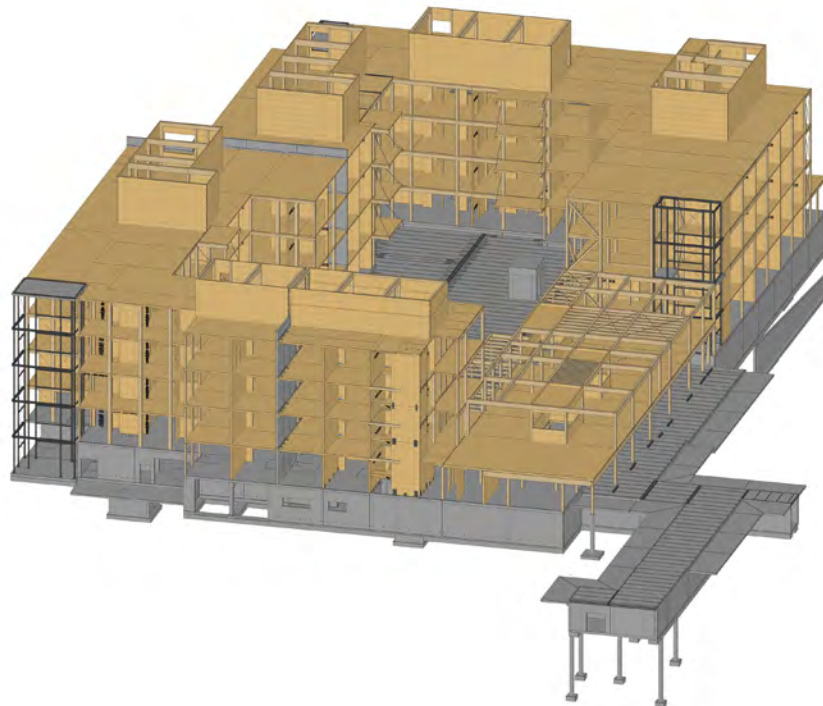
## Scope of work

Structural calculation, coordination and implementation of models from other technical trades as mechanical, electrician, ventilation etc., production modelling, site assembly plans, calculation and delivery of fixing materials, Assembly of the complete wooden structure

## Scope of delivery

2.581 m<sup>3</sup> BBS, 360 m<sup>3</sup> Glulam  
Complete set of connection material for the wooden structure

**binderholz** ■





# Hent Bussdepot

Bodø, Norway

**Project** bussdepot, Workshop and office  
**Project type** new building  
**Establishment** 2021  
**Customer** Hent AS  
**Assembly** 2020

## Scope of work

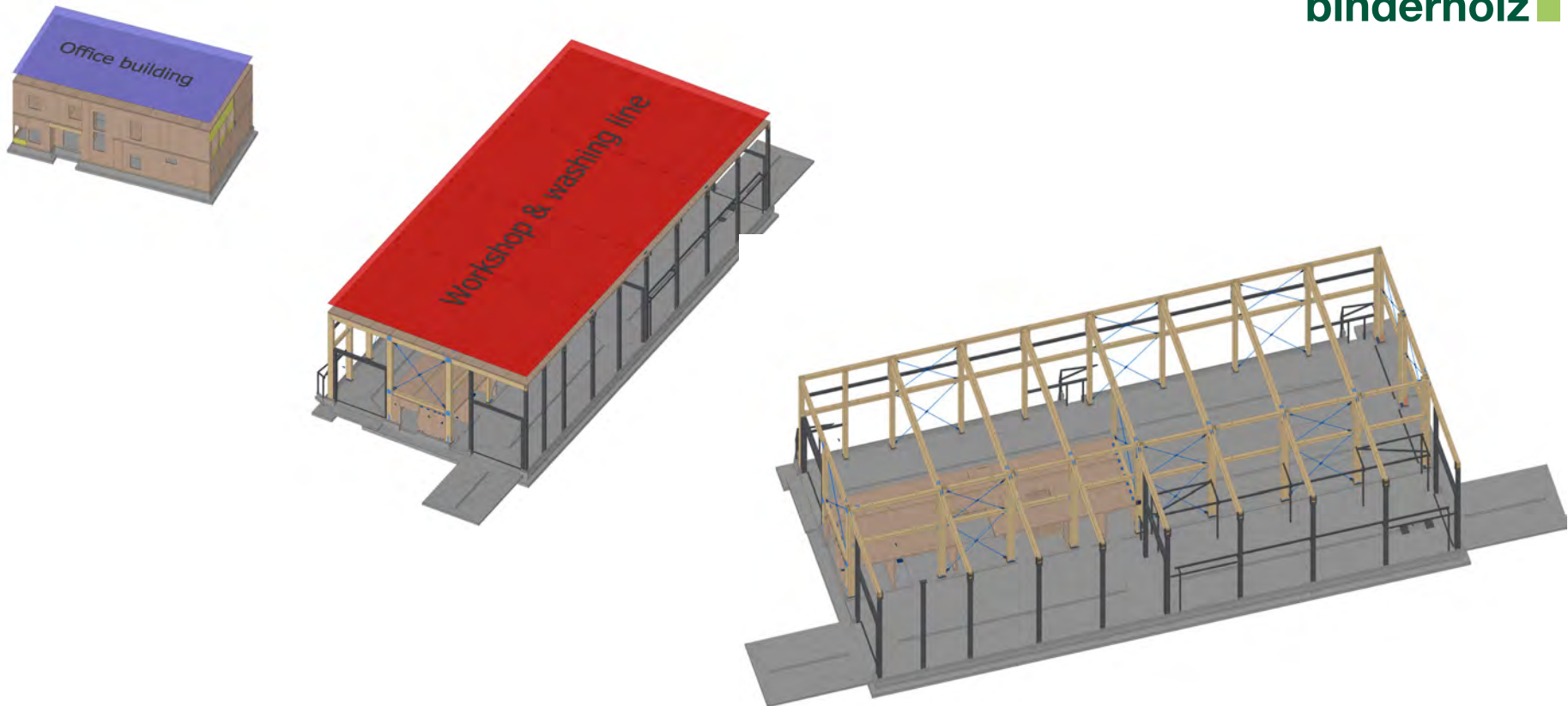
Structural calculation, coordination and implementation of models from other technical trades as mechanical, electrician, ventilation etc., production modelling, site assembly plans, calculation and delivery of fixing materials

## Scope of delivery

317 m<sup>3</sup> BBS, 106 m<sup>3</sup> Glulam

Complete set of connection material for the wooden structure

**binderholz** ■



# Neset Helsehus

Eidsvåg i Romsdal, Norway

**Project** Health center, care homes,  
day center for elderly people  
**Project type** new building  
**Establishment** 2021  
**Customer** Betonmast Rosand AS  
**Assembly** 2020-2021

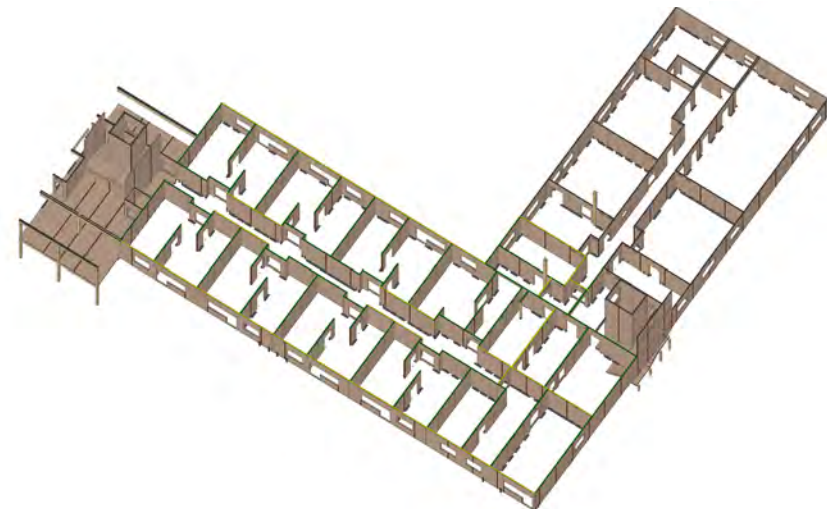
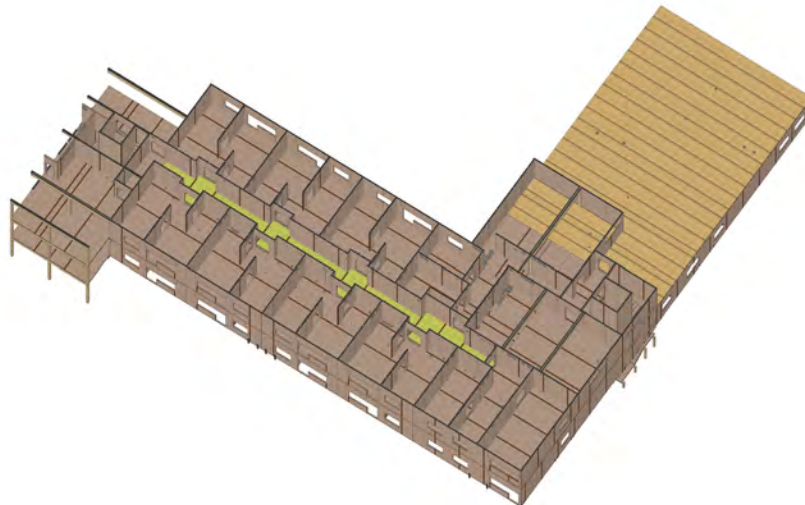
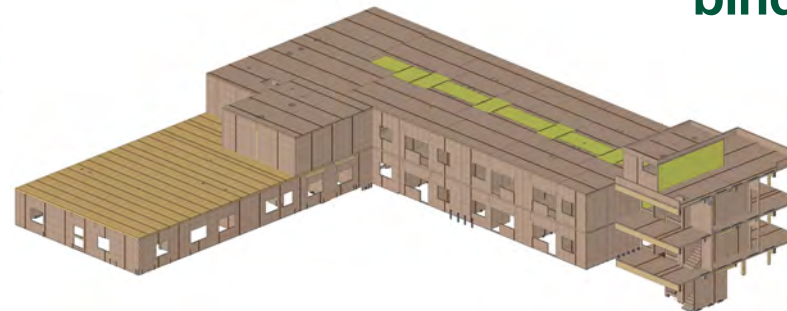
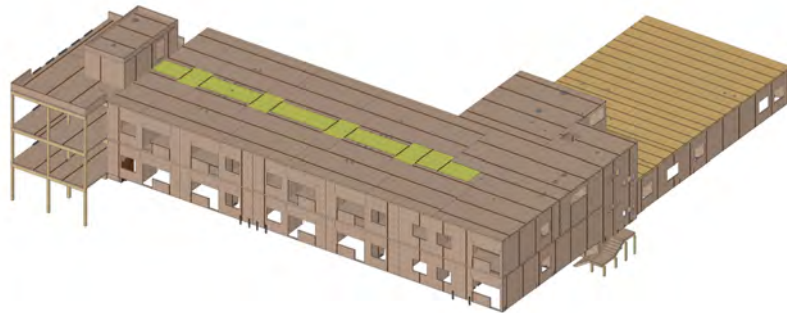
## Scope of work

Structural calculation, coordination and implementation of models from other technical trades as mechanical, electrician, ventilation etc., production modelling, site assembly plans, calculation and delivery of fixing materials

## Scope of delivery

730 m<sup>3</sup> BBS, 20 m<sup>3</sup> Glulam  
Complete set of connection material for the wooden structure

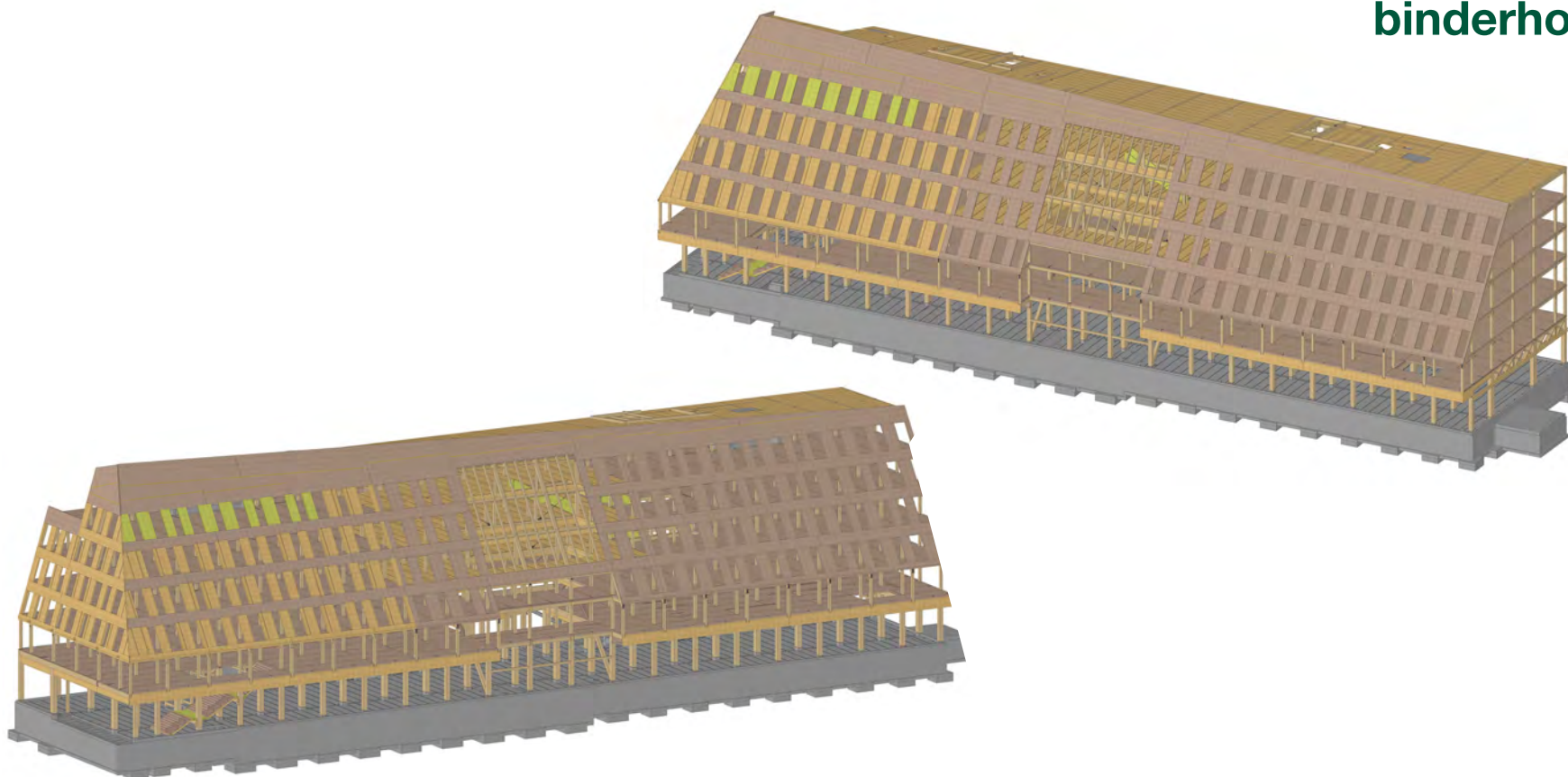
**binderholz** ■



# Stadshus

Växjö, Sweden

binderholz ■





**Project** Station and Town hall  
**Project type** new building  
**Establishment** 2020  
**Customer** Skanska Sverige AB  
**Assembly** 2019

### Scope of work

Structural calculation, coordination and implementation of models from other technical trades as mechanical, electrician, ventilation etc., production modelling, site assembly plans, calculation and delivery of fixing materials, Assembly of the complete wooden structure

### Scope of delivery (approximate)

3000 m<sup>3</sup> binderholz CLT BBS

1100 m<sup>3</sup> Glulam

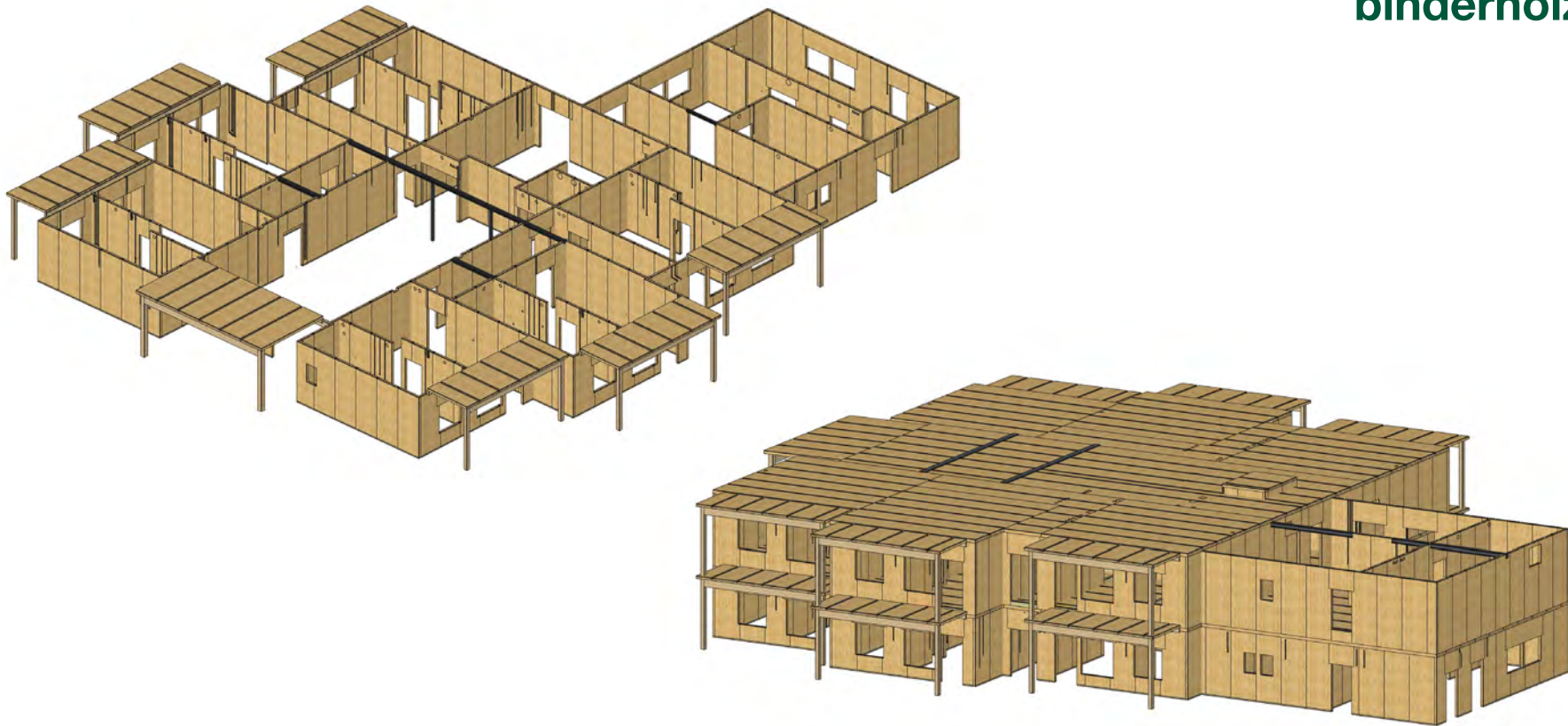
Complete set of connection material for the wooden structure



## Care home

Alvesta, Sweden

**binderholz** ■





**Project** Care home  
**Project type** new building  
**Establishment** 2016  
**Customer** GBJ Bygg AB  
**Assembly** 2015

### Scope of work

Structural calculation, coordination and implementation of models from other technical trades as mechanical, electrician, ventilation etc., production modelling, site assembly plans, calculation and delivery of fixing materials, supervising

### Scope of delivery (approximate)

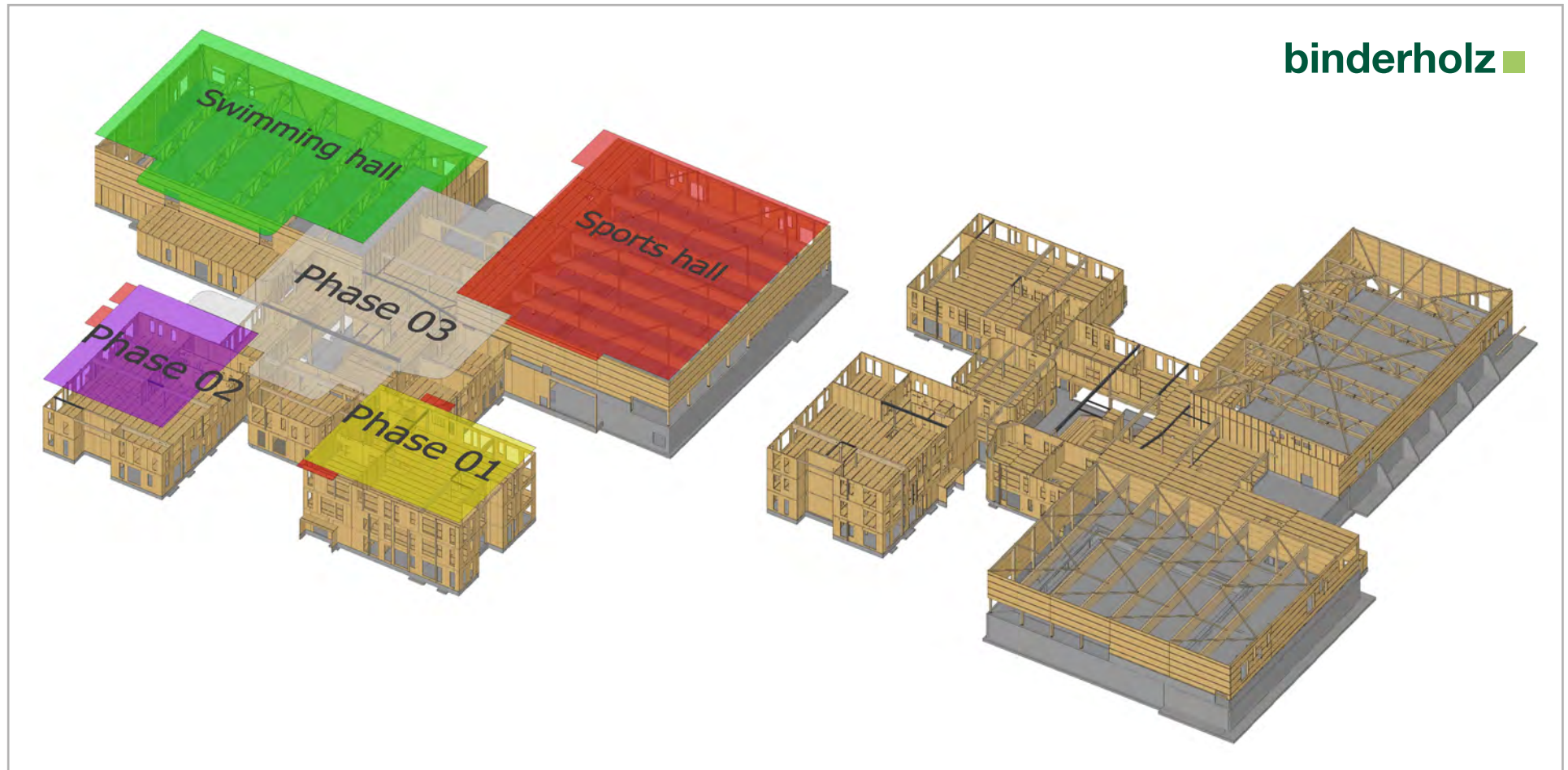
400 m<sup>3</sup> binderholz CLT BBS

10 m<sup>3</sup> Glulam



# Flesberg school

Lampeland, Norway





**Project** School building, Sport hall and swimming hall  
**Project type** new building  
**Establishment** 2019  
**Customer** Backe Stor-Oslo AS  
**Assembly** 2018-2019

### Scope of work

Structural calculation, coordination and implementation of models from other technical trades as mechanical, electrician, ventilation etc., production modelling, site assembly plans, calculation and delivery of fixing materials, Assembly of the complete wooden structure

### Scope of delivery (approximate)

1500 m<sup>3</sup> binderholz CLT BBS

400 m<sup>3</sup> Glulam

Complete set of connection material for the wooden structure



# Okstad skole

Trondheim, Norway

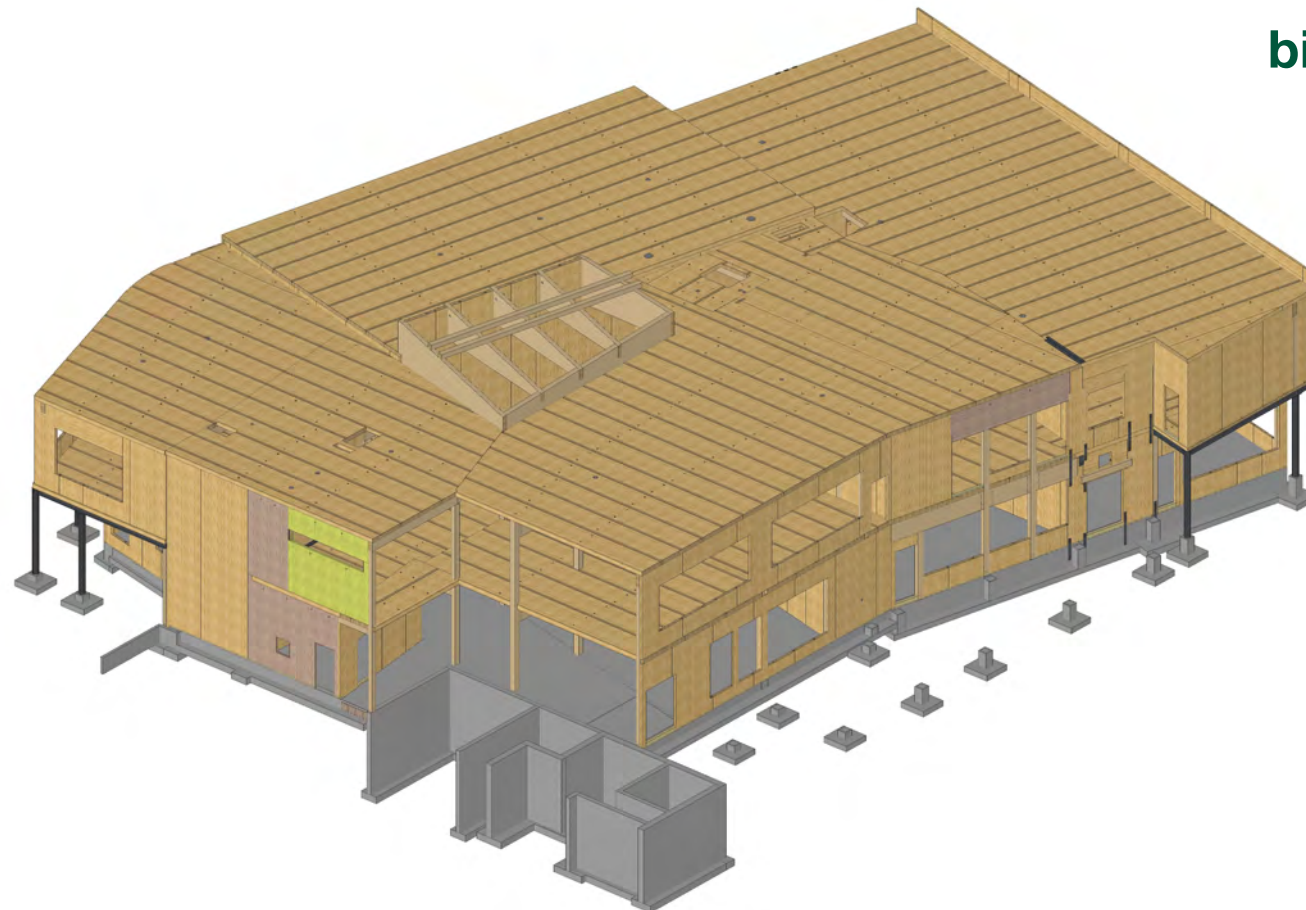
**Project** school building  
**Project type** new building, school building  
**Establishment** 2019  
**Customer** Hent AS  
**Assembly** 2018-2019

## Scope of work

Structural calculation, coordination and implementation of models from other technical trades as mechanical, electrician, ventilation etc., production modelling, site assembly plans, calculation and delivery of fixing materials

## Scope of delivery (approximate)

750 m<sup>3</sup> binderholz CLT BBS  
120 m<sup>3</sup> Glulam



**binderholz** ■



# Nordlandet Kindergarden

## Kristiansund, Norway

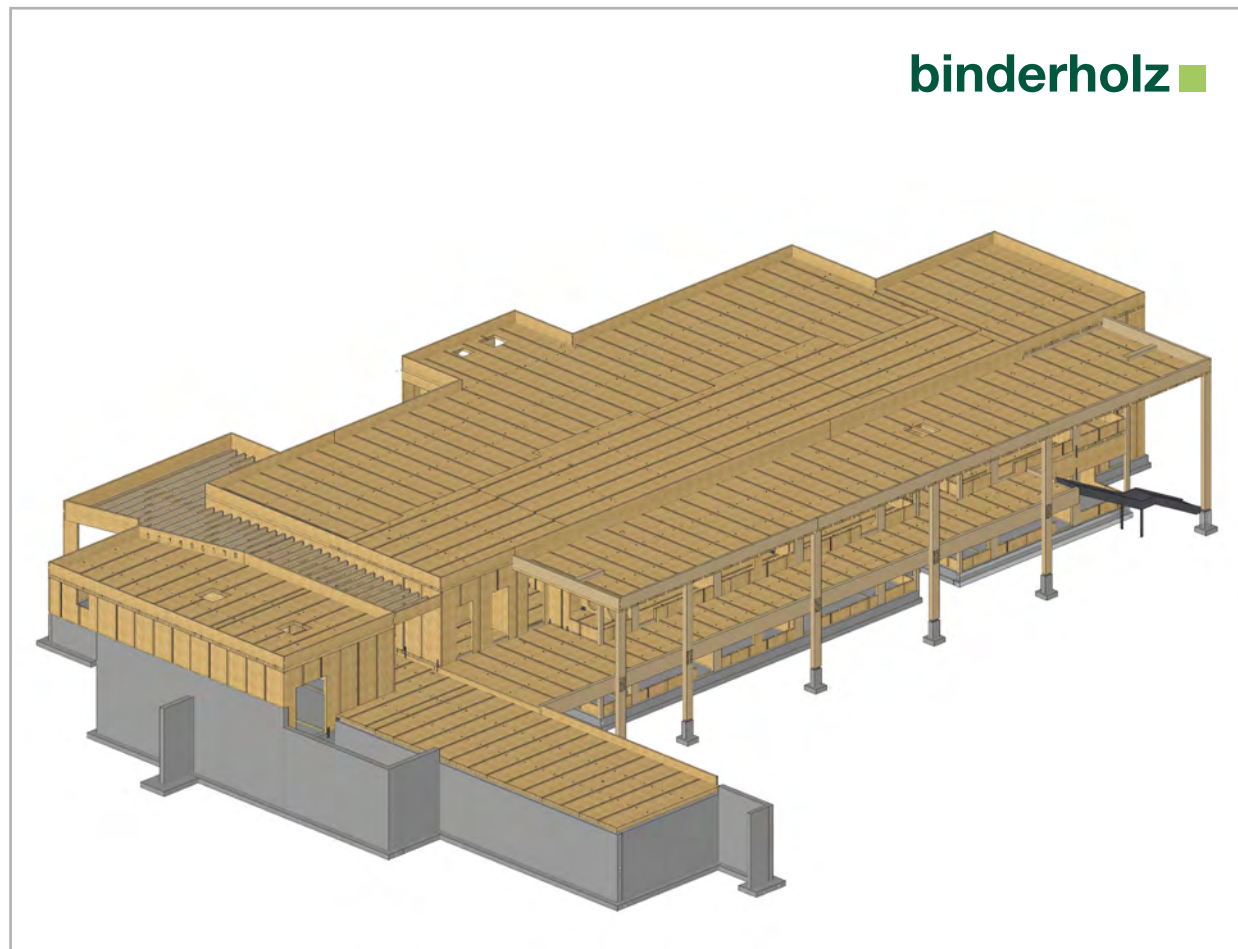
**Project** Kindergarden  
**Project type** new building, Kindergarden  
**Establishment** 2018  
**Customer** Betonmast Rosand AS  
**Assembly** 2018

### Scope of work

Structural calculation, coordination and implementation of models from other technical trades as mechanical, electrician, ventilation etc., production modelling, site assembly plans, calculation and delivery of fixing materials

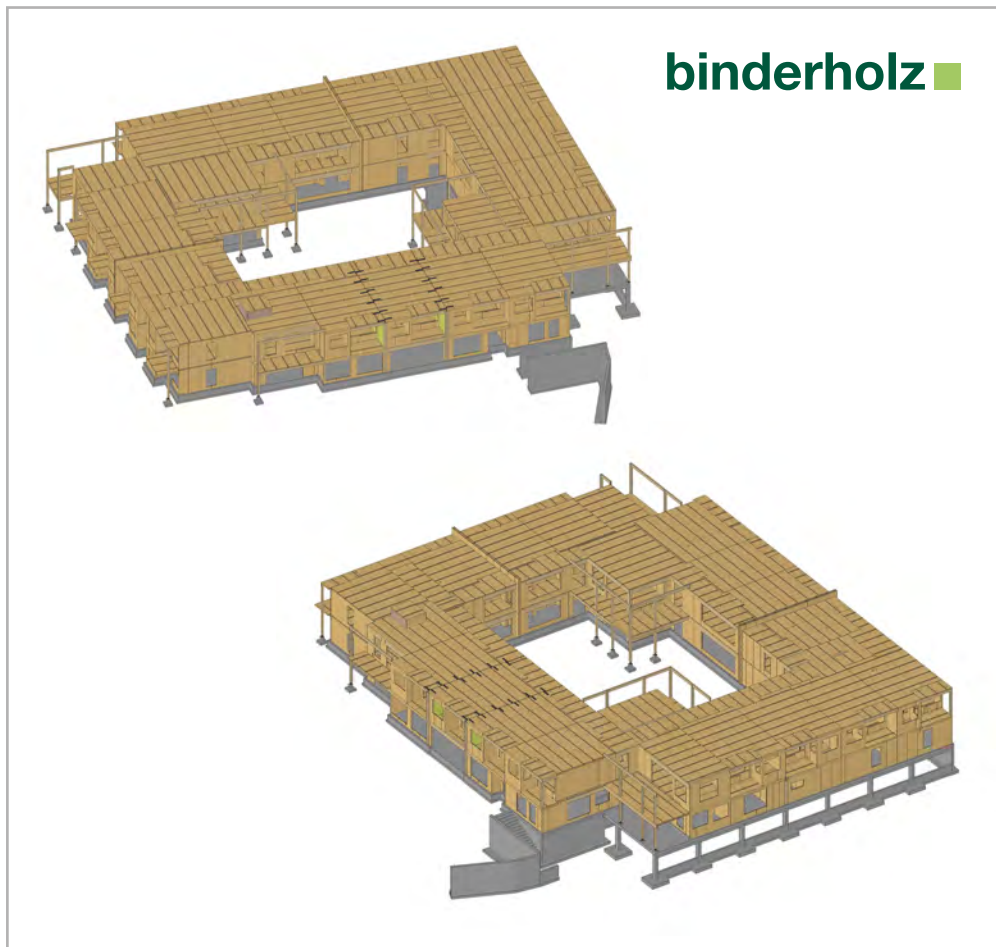
### Scope of delivery (approximate)

600 m<sup>3</sup> binderholz CLT BBS  
Glulam



# Kildal Omsorgssenter

Roa, Norway





**Project** Care home  
**Project type** new building  
**Establishment** 2019  
**Customer** Betonmastaere AS  
**Assembly** 2018-2019

### Scope of work

Structural calculation, coordination and implementation of models from other technical trades as mechanical, electrician, ventilation etc., production modelling, site assembly plans, calculation and delivery of fixing materials, Assembly of the complete wooden structure

### Scope of delivery (approximate)

900 m<sup>3</sup> binderholz CLT BBS

70 m<sup>3</sup> Glulam

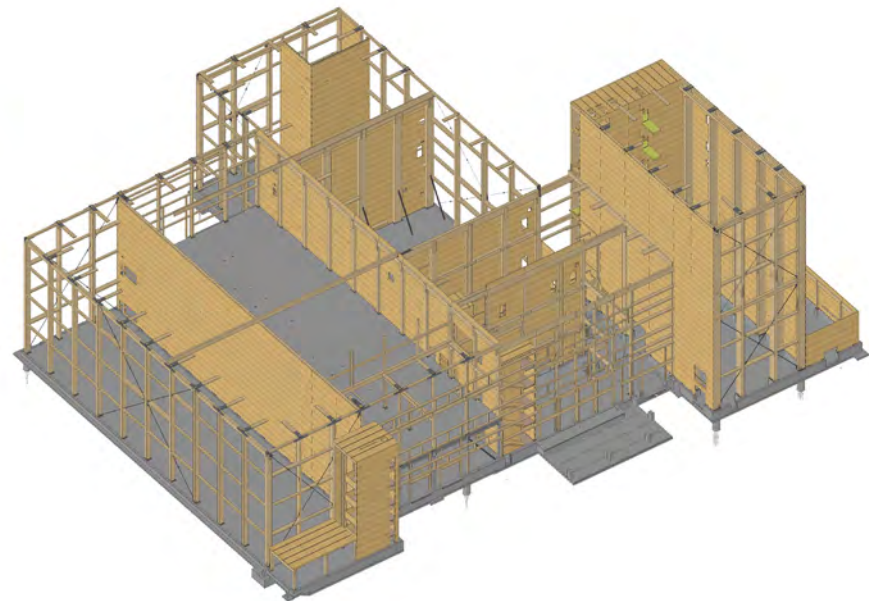
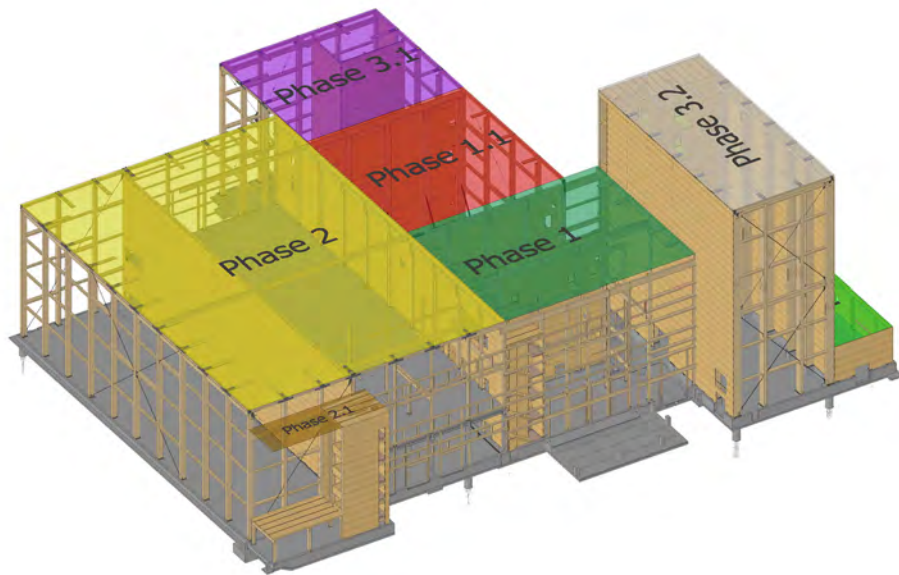
Complete set of connection material for the wooden structure



# Johannson Kaffee

Vestby, Norway

binderholz ■

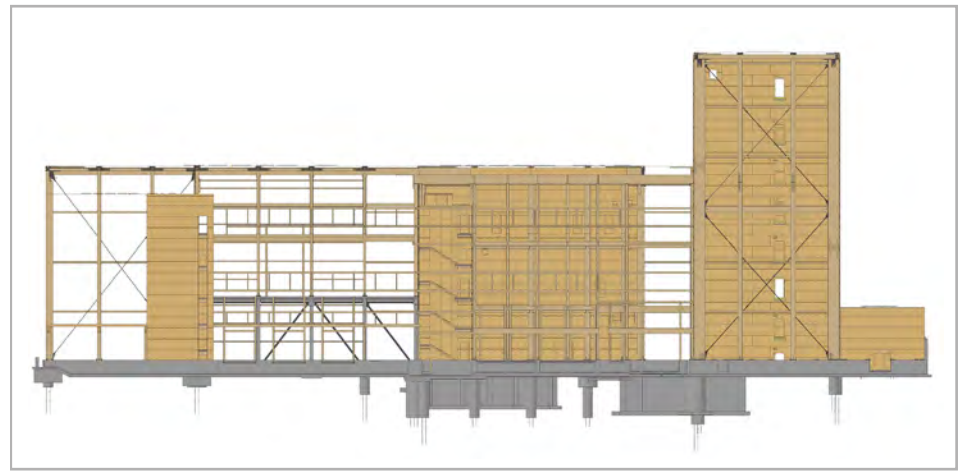




**Project** production facility  
**Project type** new building  
**Establishment** 2019  
**Customer** AF Gruppen Norge AS  
**Assembly** 2018-2019

**Scope of work**  
Structural calculation support, production modelling, site assembly plans, calculation and delivery of fixing materials, supervising

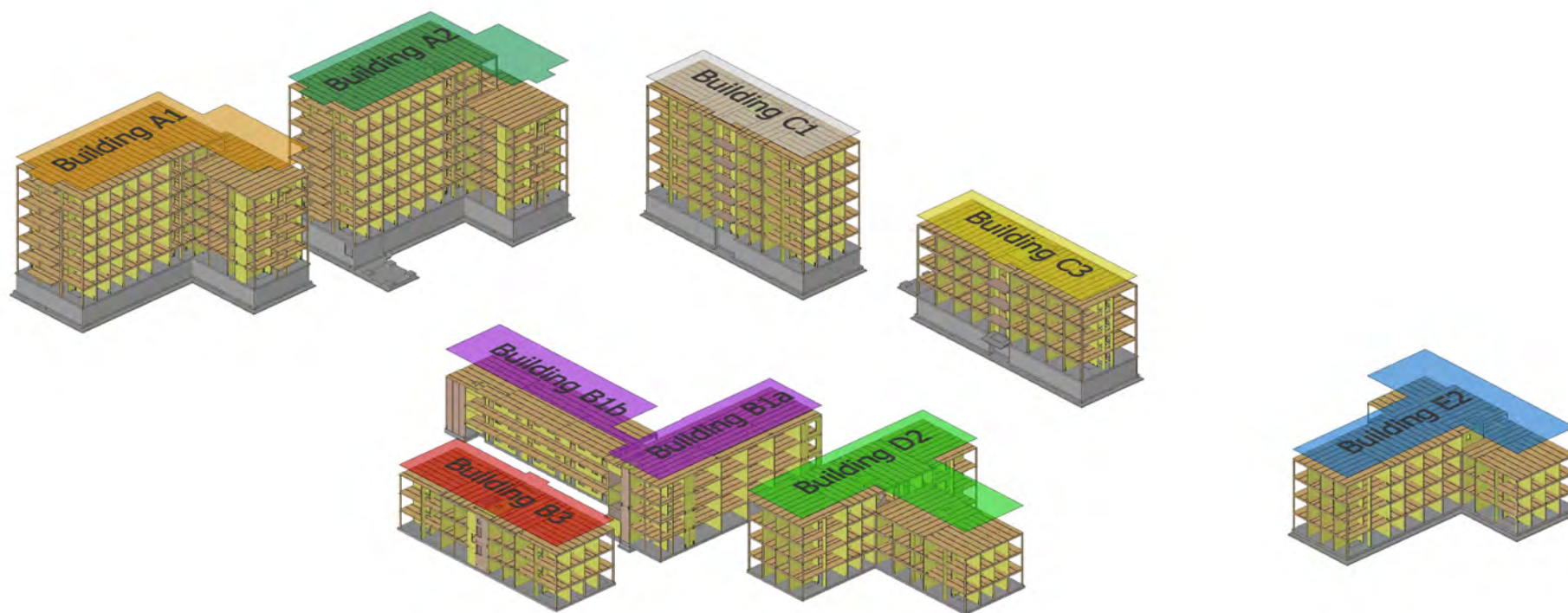
**Scope of delivery (approximate)**  
1.500 m<sup>3</sup> binderholz CLT BBS  
1.200 m<sup>3</sup> Glulam  
Connection material



# Skogveien

Oslo, Norway

binderholz ■





**Project** Student homes  
**Project type** new building  
**Establishment** 2021  
**Customer** Veidekke Entreprenør AS  
**Assembly** 2019-2020

### Scope of work

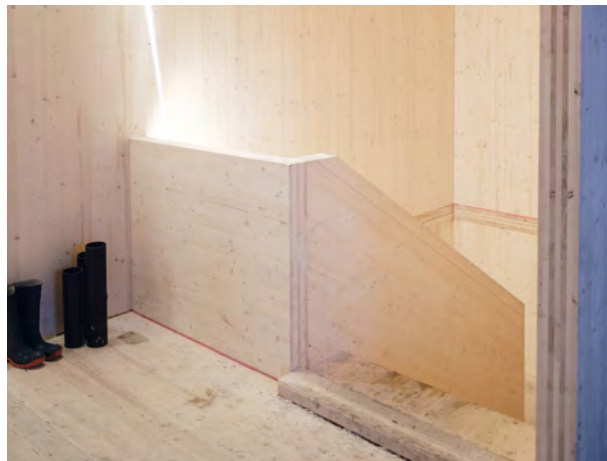
Structural calculation, coordination and implementation of models from other technical trades as mechanical, electrician, ventilation etc., production modelling, site assembly plans, calculation and delivery of fixing materials, Assembly of the complete wooden structure

### Scope of delivery (approximate)

5500 m<sup>3</sup> binderholz CLT BBS

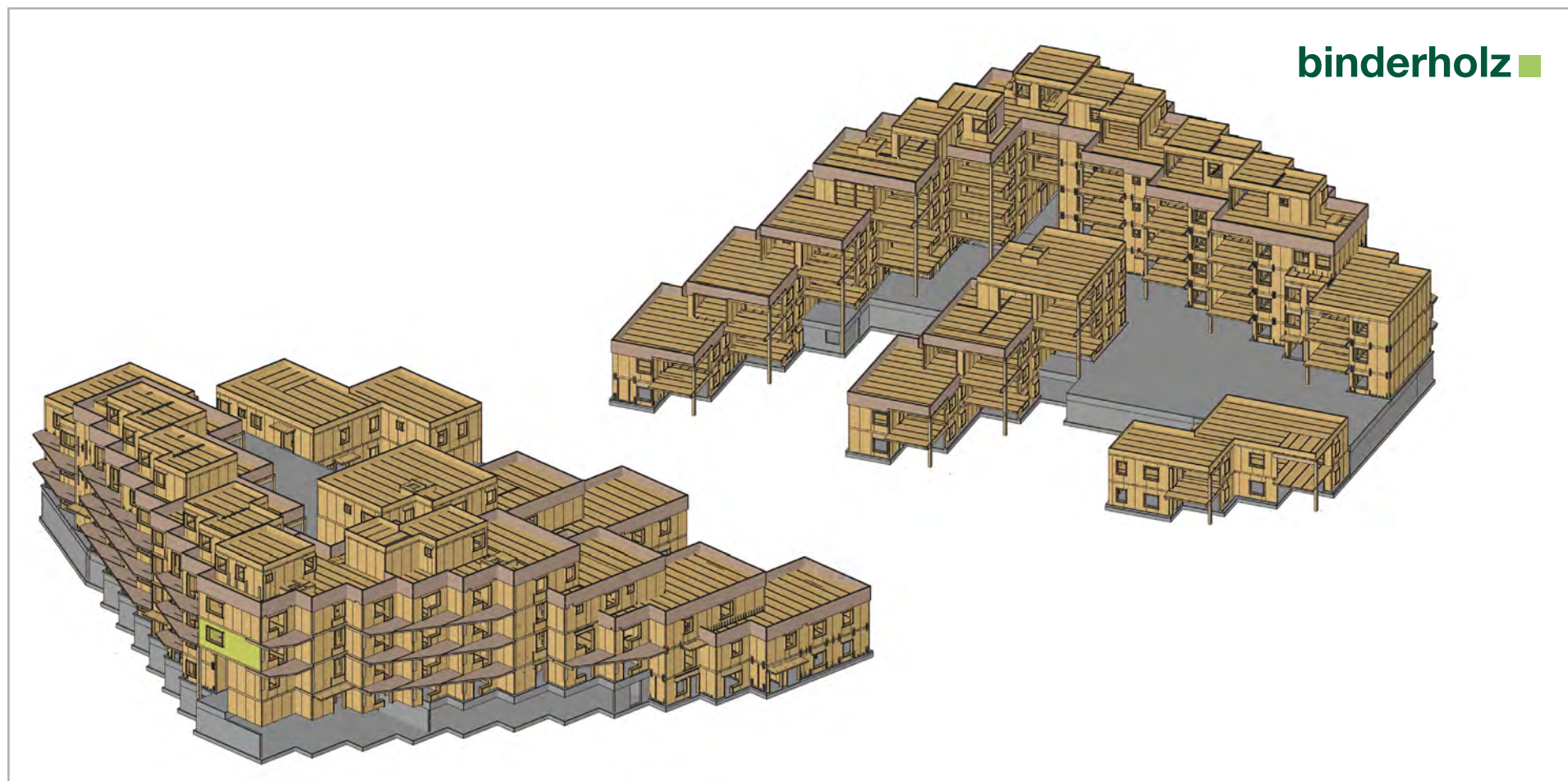
700 m<sup>3</sup> Glulam

Complete set of connection material for the wooden structure



## Strandsnäckan residential buildings

Växjö, Sweden





**Project** Residential buildings  
**Project type** new building  
**Establishment** 2017  
**Customer** GBJ Bygg AB  
**Assembly** 2016-2017

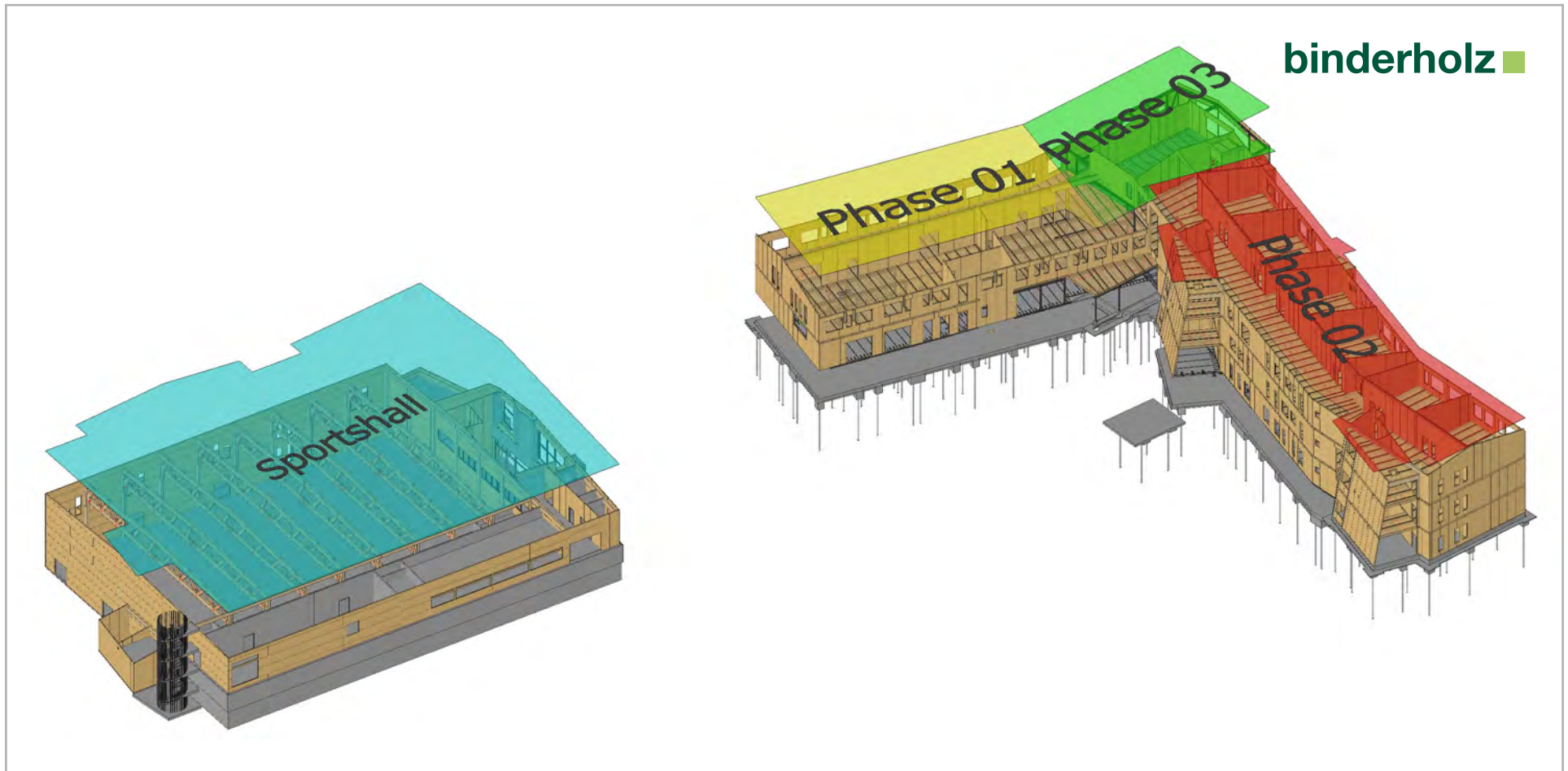
**Scope of work**  
Structural calculation support, production modelling, site assembly plans, calculation and delivery of fixing materials

**Scope of delivery (approximate)**  
1900 m<sup>3</sup> binderholz CLT BBS  
90 m<sup>3</sup> Glulam



# Hoppern skole and sportshall

Mos, Norway

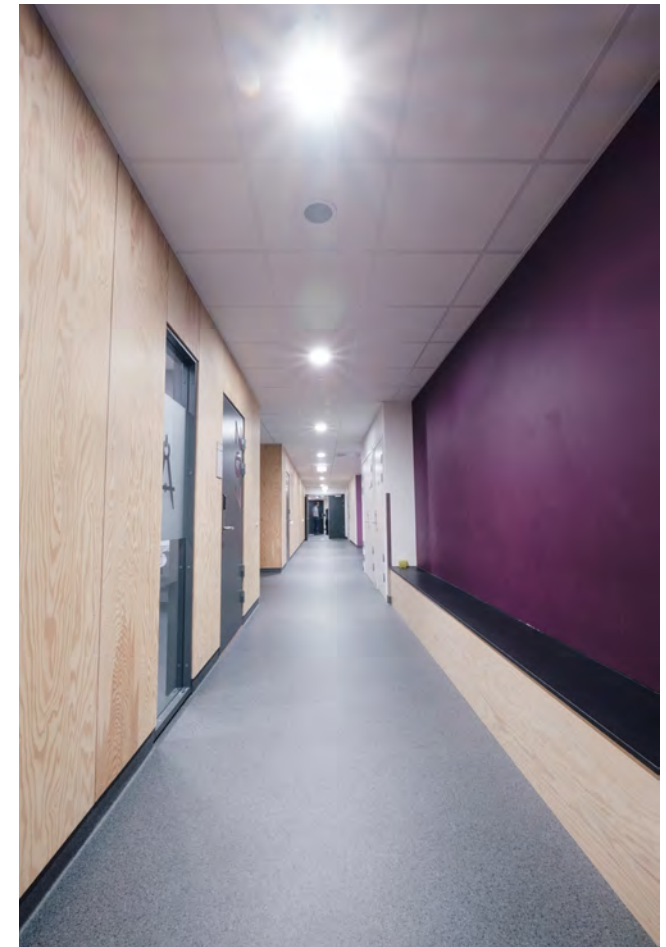




**Project** school building and sportshall  
**Project type** new building, school and sportshall  
**Establishment** 2018  
**Customer** AF Gruppen Norge AS  
**Assembly** 2017-2018

**Scope of work**  
Production model, calculation and delivery of fixing materials

**Scope of delivery (approximate)**  
2000 m<sup>3</sup> binderholz CLT BBS  
Glulam



# Sjetne skole

## Sjatnmarka, Norway

**Project** school building  
**Project type** new building, school building  
**Establishment** 2018  
**Customer** Hent AS  
**Assembly** 2017-2018

### Scope of work

Structural calculation, coordination and implementation of models from other technical trades as mechanical, electrician, ventilation etc., production modelling, site assembly plans, calculation and delivery of fixing materials, supervising

### Scope of delivery (approximate)

1100 m<sup>3</sup> binderholz CLT BBS  
150 m<sup>3</sup> Glulam





# Karihola Kindergarden

Oslo, Norway

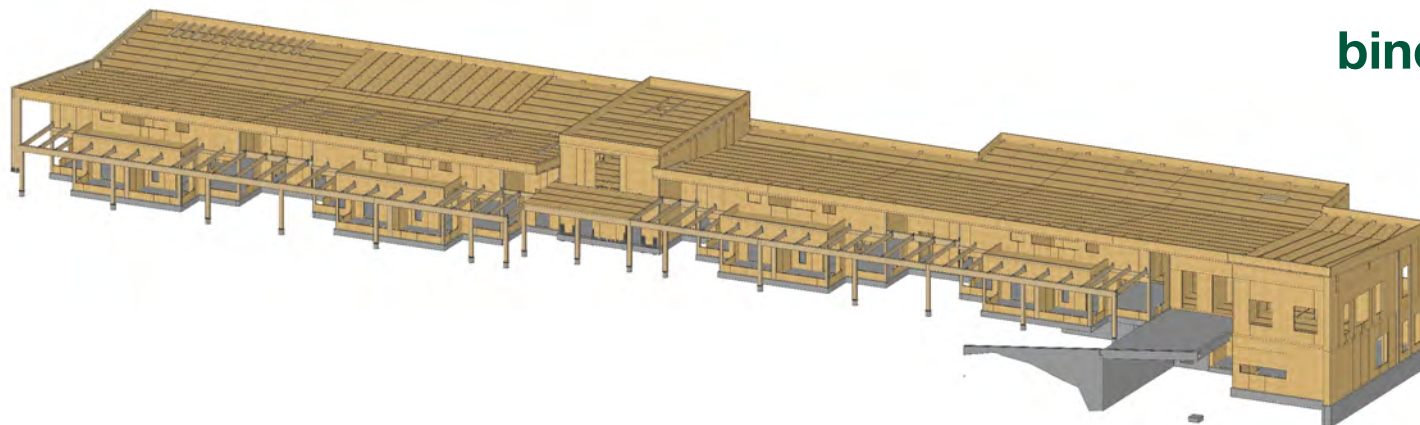
**Project** Kindergarden  
**Project type** new building, Kindergarden  
**Establishment** 2018  
**Customer** Betonmast Rosand AS  
**Assembly** 2017-2018

## Scope of work

Structural calculation, coordination and implementation of models from other technical trades as mechanical, electrician, ventilation etc., production modelling, site assembly plans, calculation and delivery of fixing materials, Supervising

## Scope of delivery (approximate)

900 m<sup>3</sup> binderholz CLT BBS  
60 m<sup>3</sup> Glulam

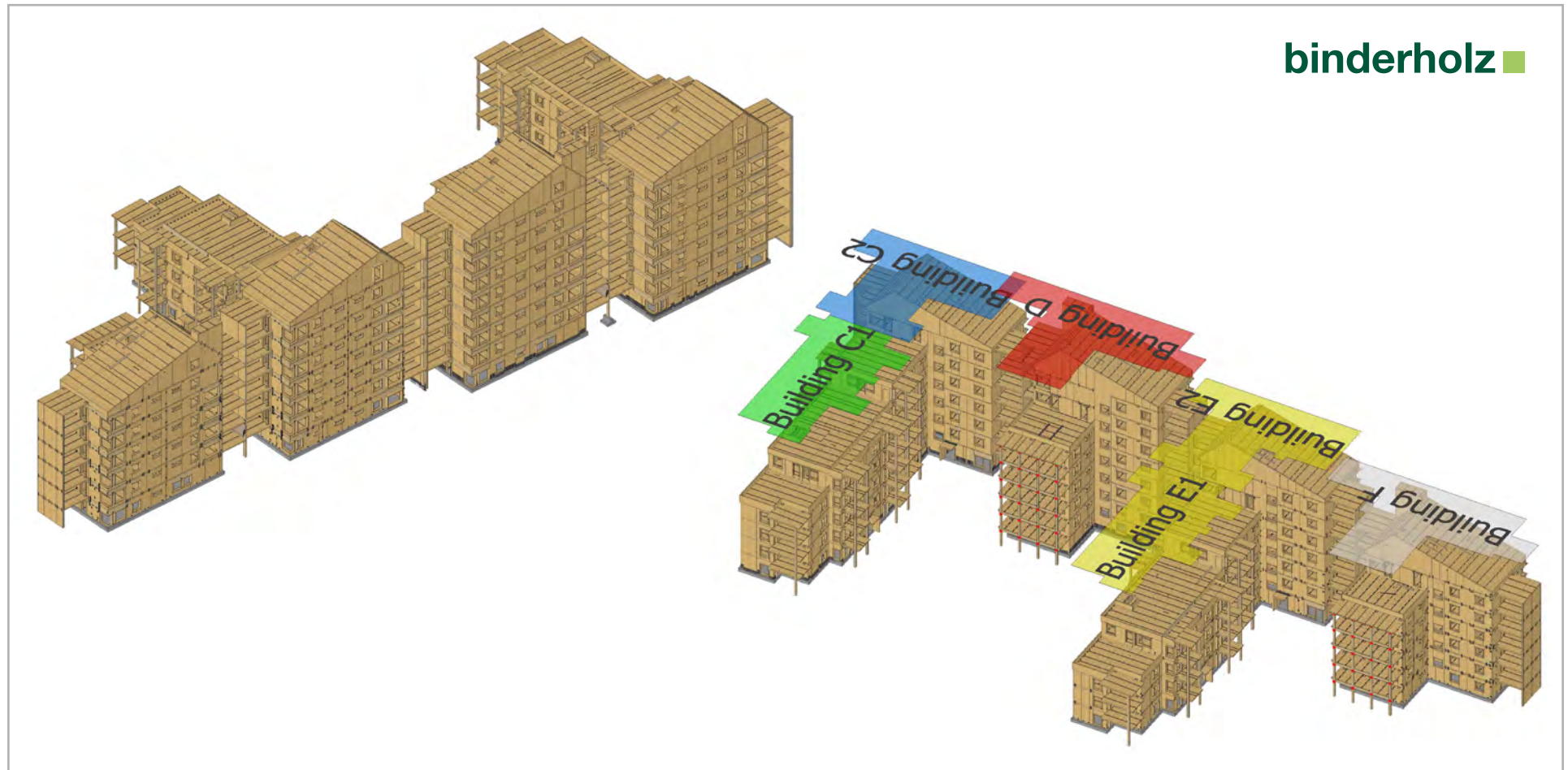


**binderholz** ■



## Vallen residential buildings

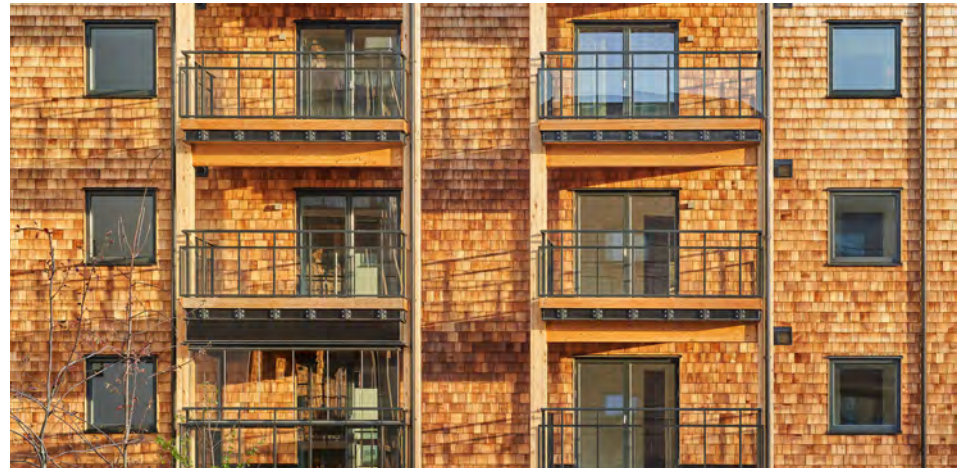
Växjö, Sweden



**Project** Residential buildings  
**Project type** new building  
**Establishment** 2017-2018  
**Customer** GBJ Bygg AB  
**Assembly** 2016-2018

**Scope of work**  
Production modelling

**Scope of delivery (approximate)**  
4.200 m<sup>3</sup> binderholz CLT BBS  
600 m<sup>3</sup> Glulam

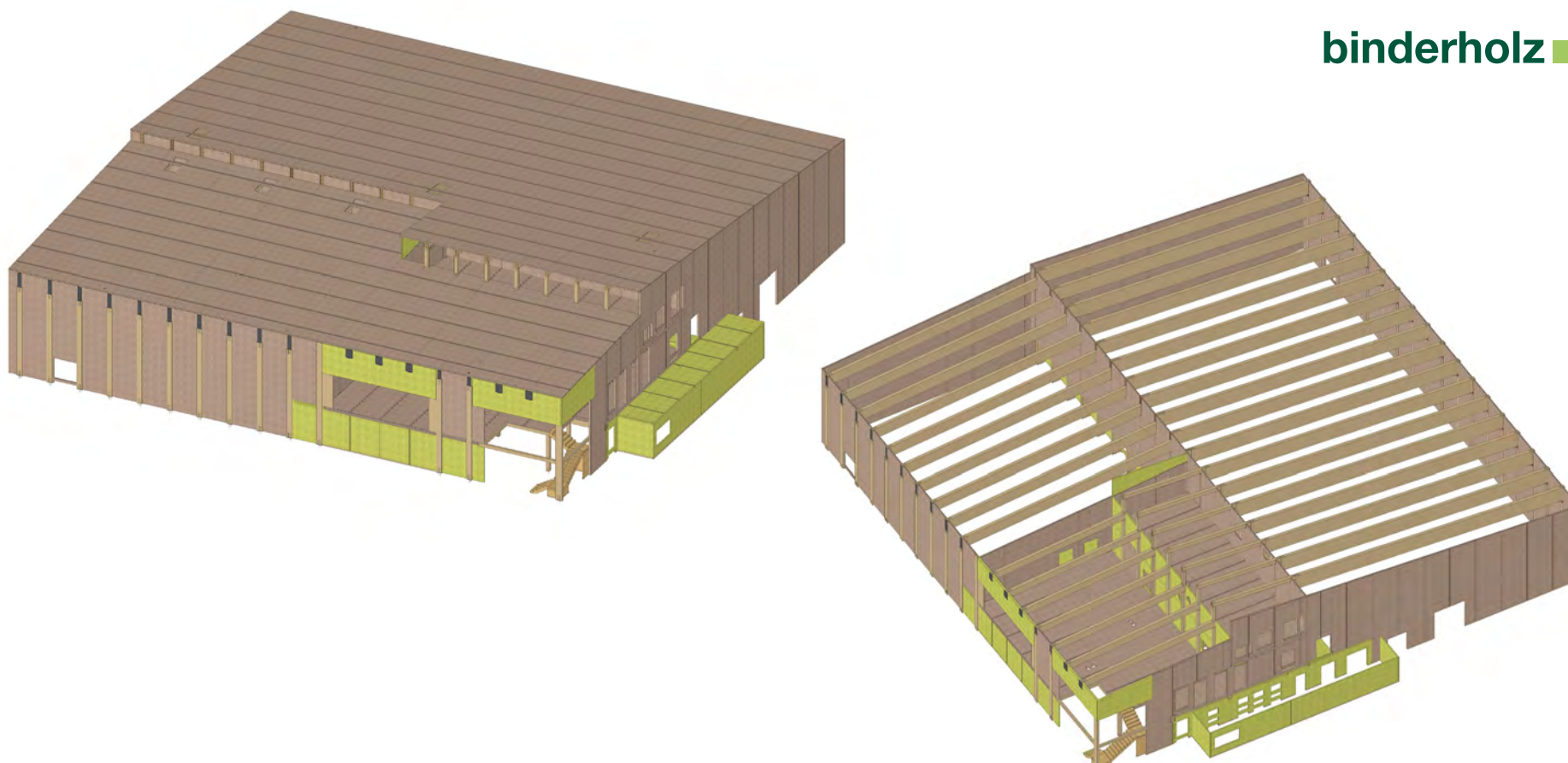




## Knapstad Flerbrukshall

Knapstad, Norway

binderholz ■





**Project**  
**Project type**  
**Establishment**  
**Customer**  
**Assembly**

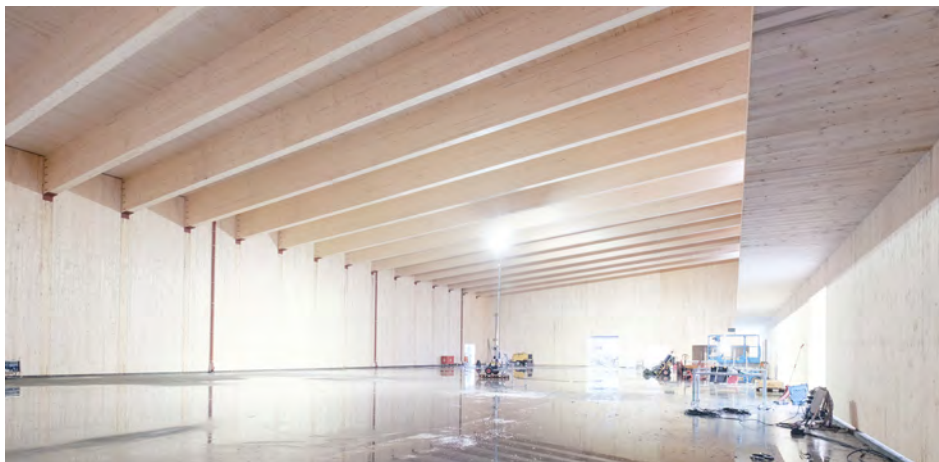
Leisure building  
new building, multi-functional hall  
under construction  
AF Gruppen Norge AS  
2019-2020

**Scope of work**

Structural calculation support, coordination and implementation of models from other technical trades as mechanical, electrician, ventilation etc., production modelling, site assembly plans, delivery of a part of fixing materials, Supervising

**Scope of delivery (approximate)**

650 m<sup>3</sup> binderholz CLT BBS  
360 m<sup>3</sup> Glulam  
connection material for the wooden structure



## Foerskolan Skole

Växjö, Sweden





**Project** school  
**Project type** new building  
**Establishment** 2019  
**Customer** GBJ Bygg AB  
**Assembly** 2018

### Scope of work

Structural calculation, coordination and implementation of models from other technical trades as mechanical, electrician, ventilation etc., production modelling, site assembly plans, calculation and delivery of fixing materials

### Scope of delivery (approximate)

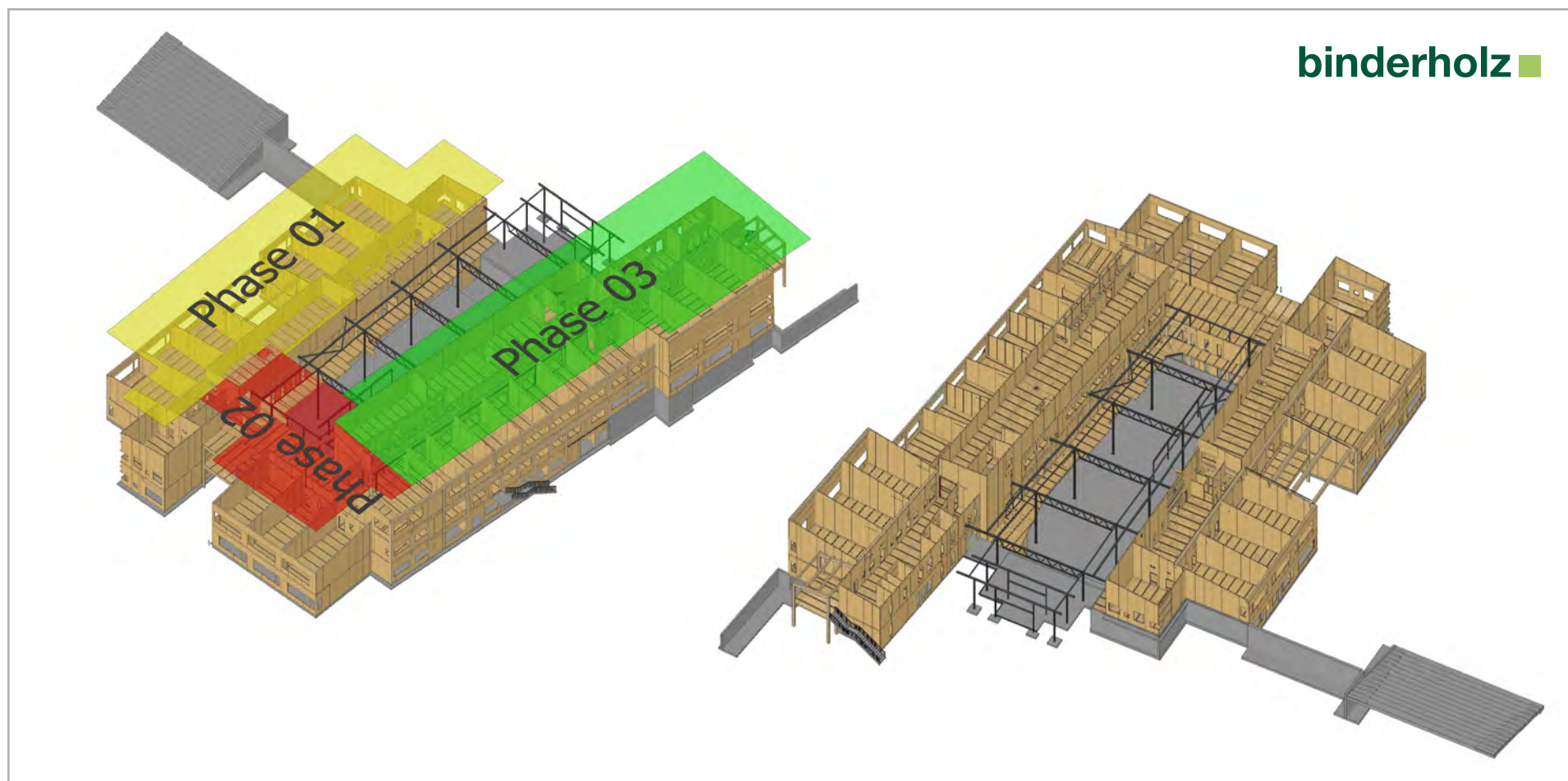
350 m<sup>3</sup> binderholz CLT BBS





## IDD Kongveien skole

Halden, Norway



**Project** school building  
**Project type** new building, school building  
**Establishment** 2018  
**Customer** AF Gruppen Norge AS  
**Assembly** 2017-2018

**Scope of work**  
Structural calculation, coordination and implementation of models from other technical trades as mechanical, electrician, ventilation etc., production modelling, site assembly plans, calculation and delivery of fixing materials, Supervising

**Scope of delivery (approximate)**  
1600 m<sup>3</sup> binderholz CLT BBS  
130 m<sup>3</sup> Glulam  
Complete set of connection material for the wooden structure

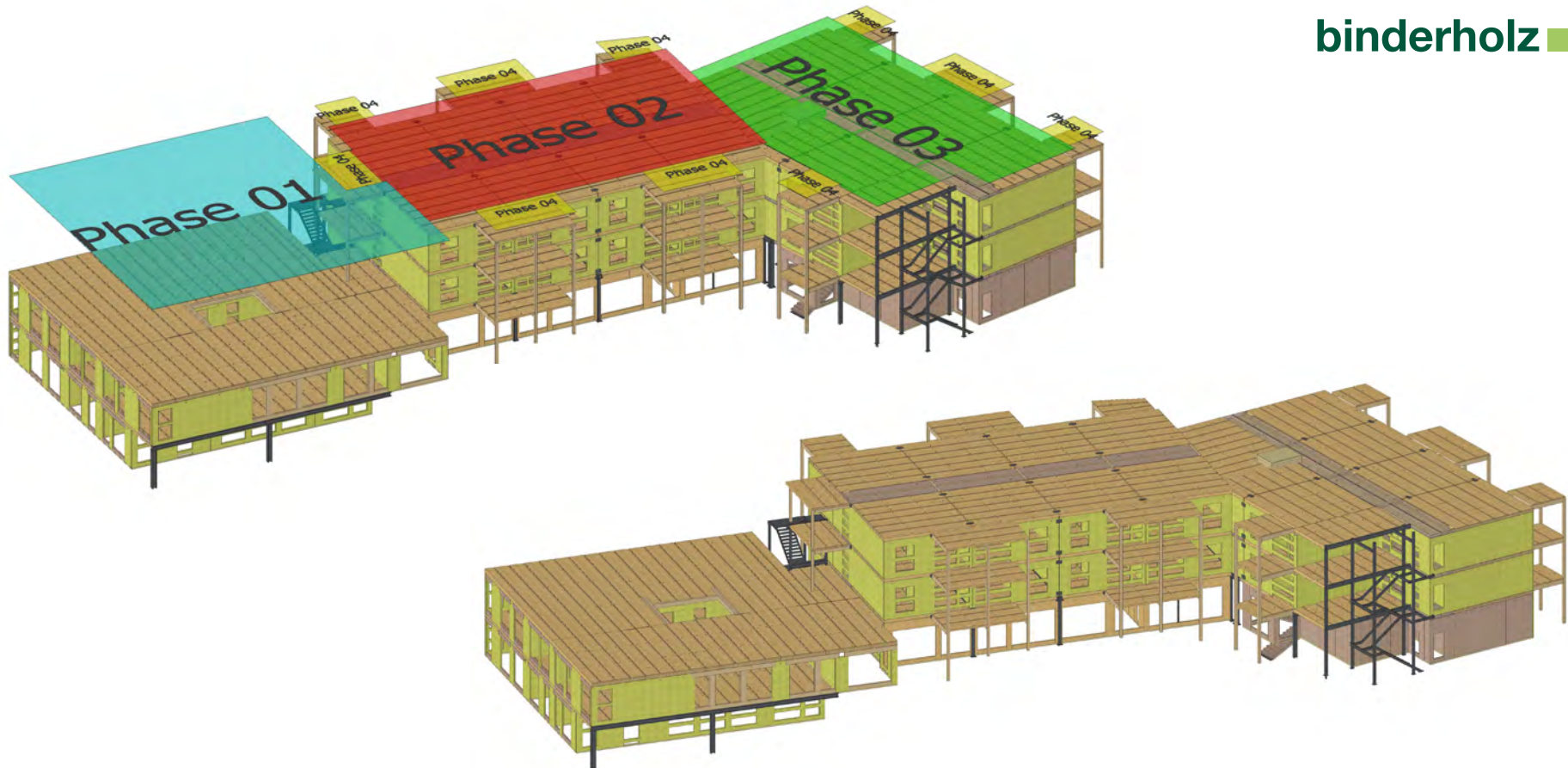




# Lokenasveien

Lorenskog, Norway

binderholz ■



**Project**  
**Project type**  
**Establishment**  
**Customer**  
**Assembly**

Kindergarden and care home  
new building, Kindergarden and care home  
2019  
Hent AS  
2018-2019

**Scope of work**

Structural calculation support, coordination and implementation of models from other technical trades as mechanical, electrician, ventilation etc., production modelling, site assembly plans, calculation and delivery of fixing materials

**Scope of delivery (approximate)**

1800 m<sup>3</sup> binderholz CLT BBS  
Glulam

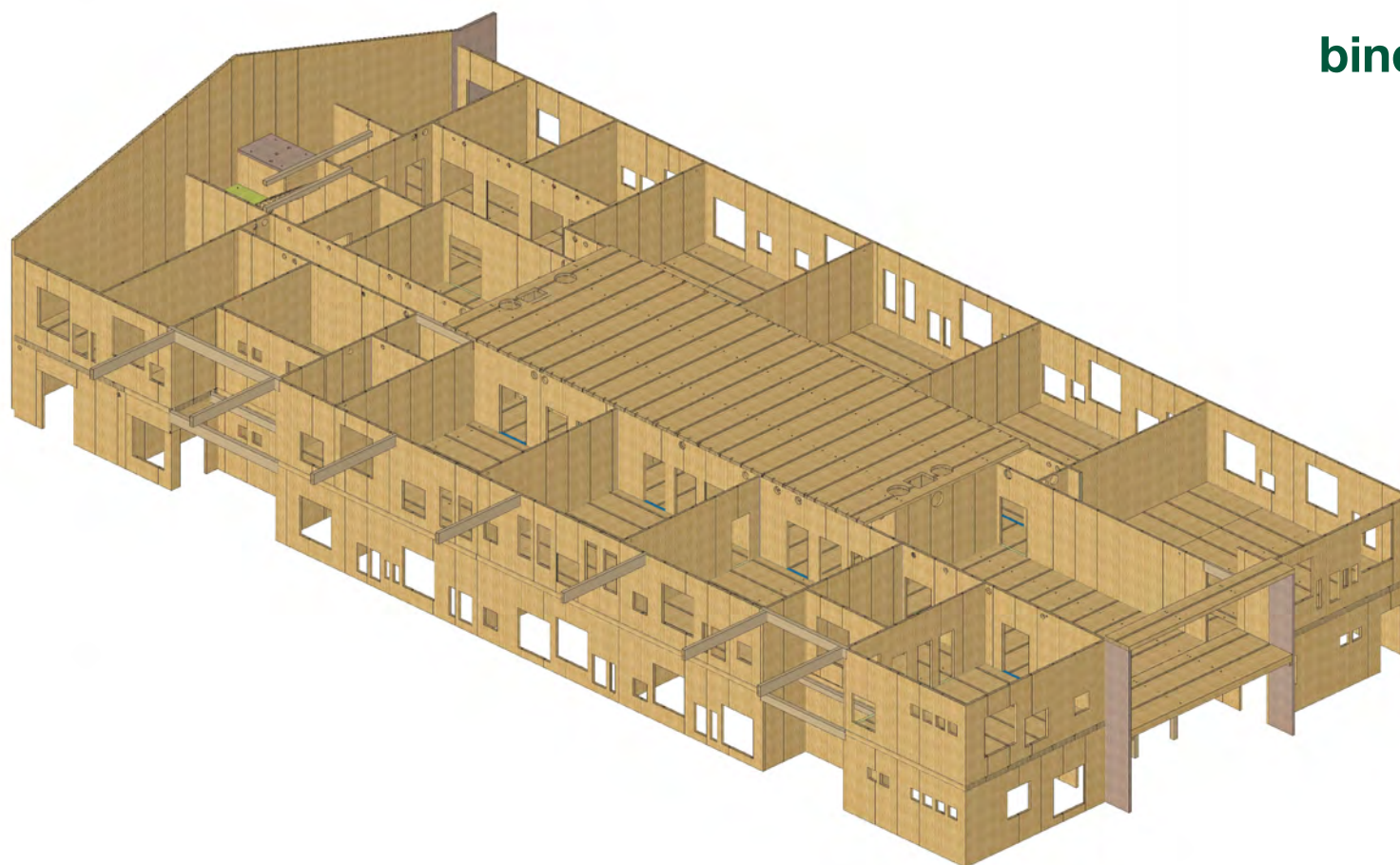




## Karlshus skole

Råde, Norway

binderholz ■



**Project** School building  
**Project type** new building, School  
**Establishment** 2017  
**Customer** AF Gruppen Norge AS  
**Assembly** 2016-2017

### Scope of work

Structural calculation support, production modelling, site assembly plans, calculation and delivery of fixing materials, Supervising

### Scope of delivery (approximate)

750 m<sup>3</sup> binderholz CLT BBS

10 m<sup>3</sup> Glulam

Complete set of connection material for the wooden structure





**binderholz** ■

**Binderholz Bausysteme GmbH · CLT BBS**

Solvay-Halvic-Strasse 46 · A-5400 Hallein

fon +43 6245 70500 · fax +43 6245 70500-17001

bbs@binderholz.com · www.binderholz.com



Download