

b_solution

just plan it ■

JUST PLAN IT

English

WE PROVIDE THE HOUSING INDUSTRY
WITH WHAT IT NEEDS.

WE GIVE THE BUILDERS
WHAT THEY WANT.

WE CHANGE BUILDING
AS YOU KNEW IT.

The first, individually plannable system solution with prefabricated solid wood components for multi-storey residential construction.

BENEFITS

GUARANTEED PRICE, GUARANTEED CONSTRUCTION TIME

- 100 % planning reliability through complete digitisation of supply, planning, production and construction processes up to handover
- Commitment to quality, time and price
- Traceability and transparency of all processes

FREEDOM OF PLANNING

- Individually plannable system solution
- Not a planning grid, but free design of the floor plan
- Suitability for a wide range of construction site requirements

UNCOMPROMISING QUALITY OF SYSTEM COMPONENTS

- Thanks to fully digitised industrial manufacturing
- Continuous quality assurance and certification
- High-level prefabrication of all system components
- b_box room module-completely industrially prefabricated with all technical installations as well as wet rooms (bathroom/toilet)

CONCEPT FOR AFFORDABLE HOUSING

- Coordinated functional basic concept
- Well thought-out details
- Adequate equipment
- More economically attractive ratio of gross to net living space

SOLID WOOD

- Balanced living environment and high level of comfort
- Fast, dry, clean and quiet construction
- Sustainably renewable, natural CO₂ and energy storage, fully recyclable
- Resource-saving use of materials

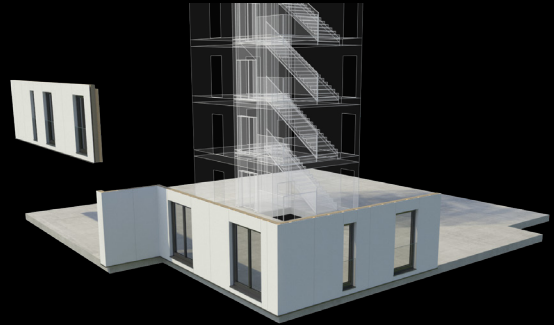
3 SYSTEM COMPONENTS

ALL YOU NEED

| 1. WALL MODULES

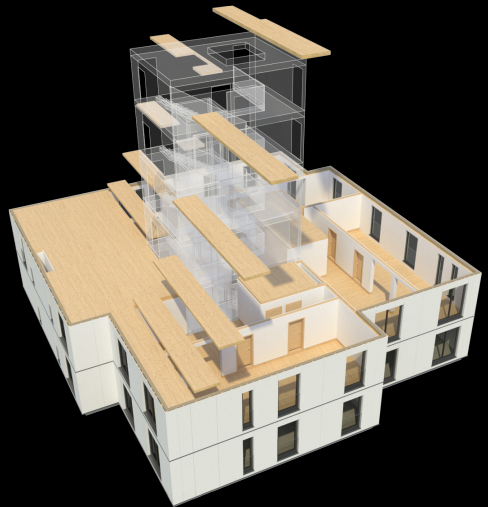
The wall modules are prefabricated to a high degree yet still provide ample room for your own planning - this contrast is combined in the flat packs with CLT BBS (solid wood). You can choose the width and height of the walls as well as the position of the window and door openings as you please.

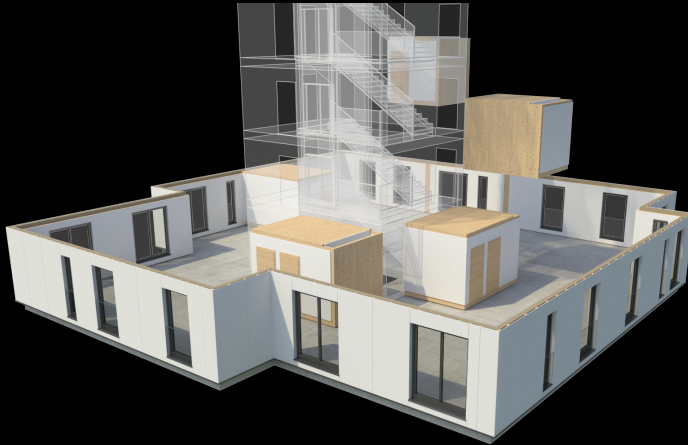
The only firmly specified part is the wall construction - because in this respect, the standardised, industrially produced flat packs have a clear advantage. Plug and Play!



|| 2. CEILINGS AND ROOFS

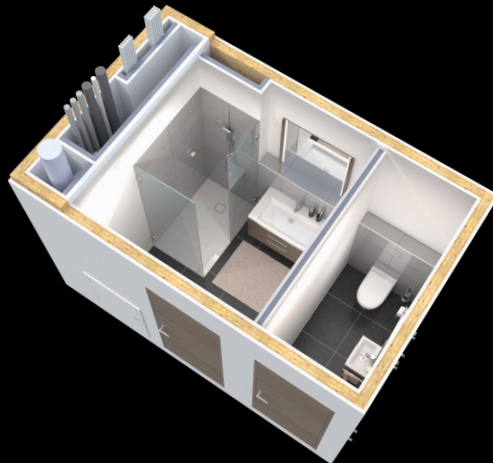
Ceilings and roofs are made of fully load-bearing CLT BBS (solid wood). You can select the appearance: you can opt for natural wood character or choose planking with plasterboard.





||| 3. b_box

The room module, prefabricated down to the last detail, includes the complete technical installations as well as the wet rooms (bathroom/toilet). Here, too, you can plan to your liking with three different sizes of the b_box as well as various equipment options.



THE PLANNING MANUAL

JUST PLAN IT

It has never been so easy to design a multi-storey residential building. With b_solution, you get a plug-in for your CAD system that allows you to assemble the system components for your project individually. From regional and national building laws to regulations for fire protection and statics-everything has already been considered for your project.

THE EQUIPMENT OPTIONS

JUST THE BASICS OR MORE

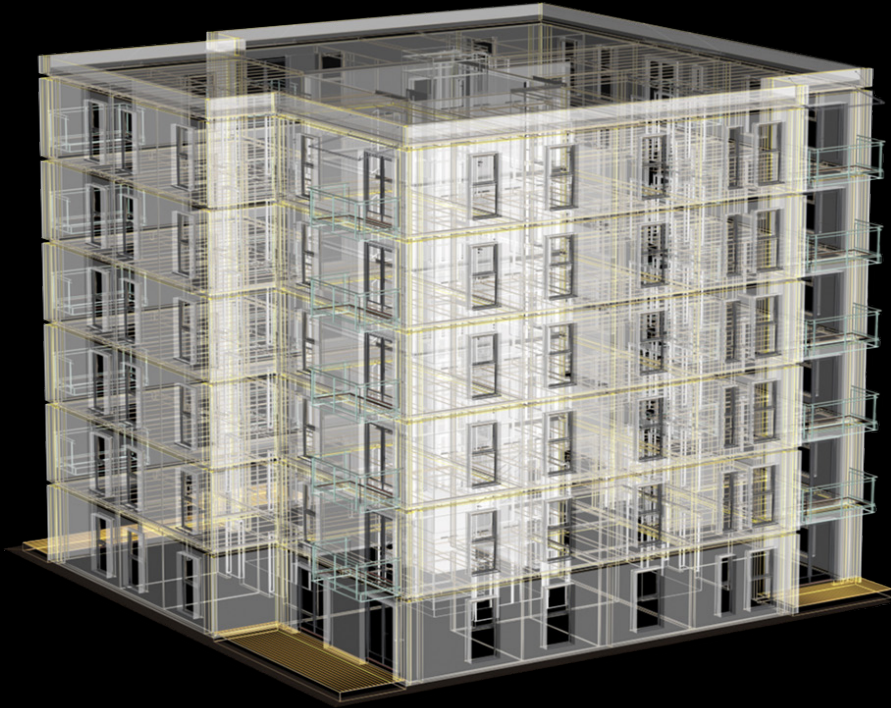
It works like buying a car: there is the basic equipment b_solution pure, which you can expand with various options. You can choose, for example, among different types of windows and shading, heating or hot water treatment. It is entirely up to you whether you decide for the standard version or a more elaborate stage of expansion.



THE DIGITAL TWIN

ONE, TWO, THREE TO 3D MODEL

You have just done the planning and already your construction project has been converted into a 3D-model with all system details and equipment information. This digital twin is the basis for the cost calculation, quickly presented to you, well-founded, accurate and binding.



b_solution

just plan it 

member of **binderholz** 

Solvay-Halvic-Strasse 46
A-5400 Hallein, Salzburg, Österreich
fon +43 6245 70500
office@b-solution.com | www.b-solution.com

